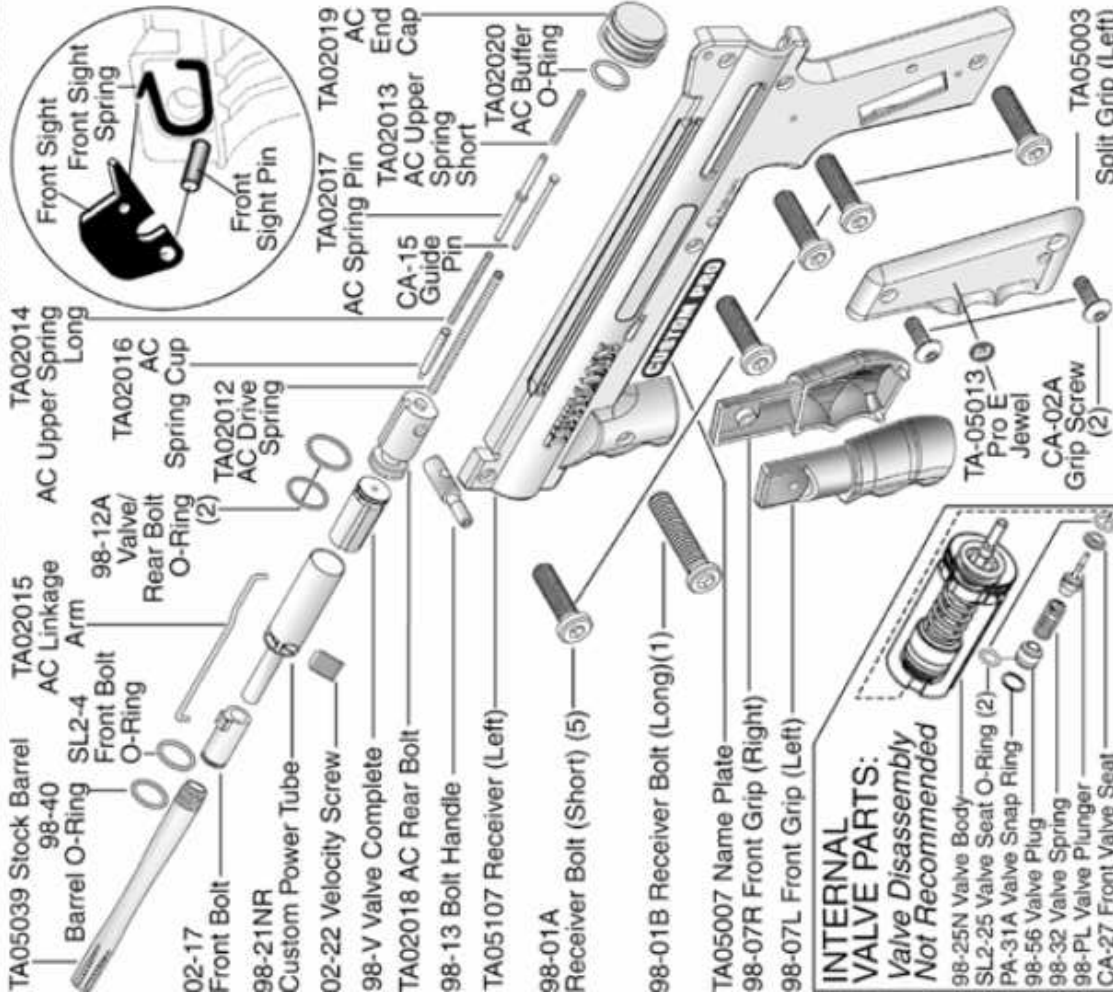
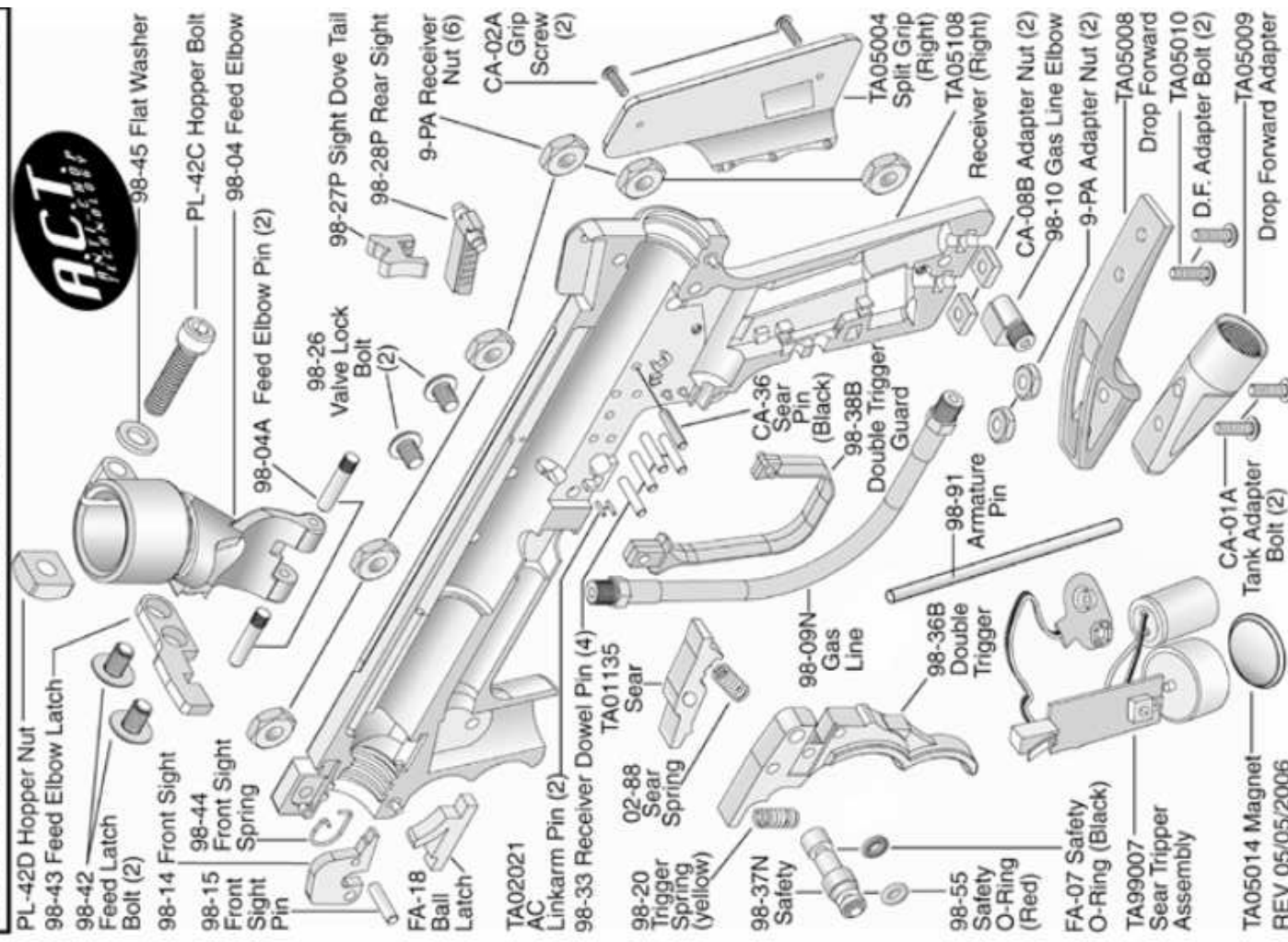


DO NOT DISASSEMBLE THIS MARKER WHILE IT IS PRESSURIZED WITH AIR. DO NOT PRESSURIZE A PARTIALLY ASSEMBLED MARKER.



INTERNAL VALVE PARTS:
Valve Disassembly Not Recommended

- TRIGGER ASSEMBLY**
- 1) Place 4 pins and 1 black sear pin into locations as shown.
 - 2) Then place the trigger and sear onto pins as shown.
 - 3) Insert sear spring as shown.
 - 4) Insert trigger spring (yellow) as shown.

